

Invited Speakers

Prof Barbara POCOCK

Professor Barbara Pocock is Director of the Centre for Work + Life, at the Hawke Research Institute for Sustainable Societies at the University of South Australia. She established the Centre in 2006. Barbara was initially trained as an economist and has been researching work, employment and industrial relations for over twenty-five years. She has worked in a range of jobs including the Reserve Bank, farming, trade unions and in government. She has also worked advising politicians and as a mother. Her past research includes analysis of employment relations, work, gender, vocational education, the regulation of industrial relations, unions and inequality. She has led the Australian Association of Industrial Relation Academics of Australia and New Zealand, and is a board member of The Australia Institute, the SA Public Sector Performance Commission Advisory Board, the Strategic Council of the Climate Institute and the Festival of Ideas Board. In 2007, Barbara won the 'society' category of *The Bulletin's* 'Smart 100 Australians'. She has been a Dunstan Fellow (2006), a Queen Elizabeth II fellow (2003-2007), a Visiting Fellow at the International Institute for Labour Studies, International Labour Organisation, Geneva and a Visiting Fellow at Ruskin College, Oxford in 2005. At present, with colleagues at the Centre for Work + Life, she is studying the changing nature of work and its intersections with changing household and social life, with Australia as the primary focus.



Prof Janet HILLER

Janet Hiller is the Professor of Public Health, Deputy Head of the School of Population Health and Clinical Practice at the University of Adelaide, Australia and the Founding Director of Adelaide Health Technology Assessment (AHTA). In 2006, she was made Honorary Professor at Shandong Academy of Occupational Health and Occupational Medicine in China. She has a PhD in Epidemiology from Johns Hopkins University and an MPH from the Hebrew University.

In 2008, Professor Hiller's services to the Public Health sector were recognised when she was awarded the Basil Hetzel Award for Leadership in Public Health by the South Australian branch of the Public Health Association and appointed as a Fellow of the Public Health Association of Australia.

She teaches undergraduate health science students and medical students and postgraduate students on courses ranging from general public health, introductory and advanced epidemiology, screening and health technology assessment. Her research has changed in recent years from having a primary focus on perinatal trials to health technology assessment. She directs the largest academic health technology assessment group in Australasia, providing technical support to underpin decisions on introduction of and reimbursement for health technologies. Current research in this area is examining disinvestment from health services of limited cost effectiveness, approaches to evaluating co-dependent technologies, direct to consumer marketing and community engagement in health decision making.

Janet has supervised more than 60 students to completion on a broad range of disciplinary areas including climate change and health, tobacco control, HIV-AIDS in China, chronic disease surveillance and socioeconomic status, breast cancer in Pakistan, over the counter pharmaceutical purchasing in Indonesia and integrated management of childhood illness in Bangladesh.

Aside from her teaching and research commitments, Professor Hiller serves on a variety of advisory boards and committees at a state, national and international level, including National Breast Cancer Foundation Research Advisory Committee, the South Australian Health Technology Advisory Group (SAHTAG), the State Accreditation Committee of BreastScreen, Australia, and Health Technology Assessment International (HTAi). She has also worked in an advisory capacity with both the Federal and South Australian Governments on numerous occasions.



Invited Speakers

Prof Fran BAUM

Fran Baum is Professor of Public Health and the inaugural Director of the Southgate Institute of Health, Society and Equity at Flinders University, Adelaide, Australia. She is the Co-Chair of the Global Steering Council of the People's Health Movement - a global network of health activists. She has served as a Commissioner for the Commission on the Social Determinants of Health established by the World Health Organisation in 2005. In 2008 she was awarded a prestigious Australian Research Council Federation Fellowship which has enabled the establishment of the Southgate Institute focusing on the social determinants of health inequity at Flinders University. Professor Baum's numerous publications relate to social and economic determinants of health, including Aboriginal people's health, health inequities, research and evaluation in community health and primary health care, theories of health promotion, Healthy Cities, social capital and health promotion, and the political economy of health.



A/Prof Daryle RIGNEY

Associate Professor Daryle Rigney is an Indigenous Ngarrindjeri educationalist and community leader who has been at the forefront of recent Ngarrindjeri Nation initiatives to improve the well-being of its people through intervention in the social, political, cultural and economic crises of the community. His work with the recently formed Ngarrindjeri Regional Authority has centred on theoretically informed positive transformation through research, community development, governance, cultural and natural resource management, economic development and education. Daryle is a current staff member and former Director of the Yunggoorendi, First Nations Centre for Higher Education and Research, Flinders University. He is a governing board member of the United League of Indigenous Nations and has worked with other Indigenous/First Nation's peoples in Australia, New Zealand, Canada, the US, Hawaii and Taiwan.



A/Prof Jenny BAKER

Associate Professor Jenny Baker is a Mirning woman, mother and grandmother. She worked as a registered nurse in the 1970s and 80s before taking up academic work in the early 1990s. Her postgraduate degrees are a Master of Primary Health Care and a Doctor of Philosophy through the Department of Women's Studies at Flinders University. In January 2010 she was appointed Associate Professor in Aboriginal Health in Yaitya Purrana Indigenous Health Unit in the School of Population Health and Clinical Practice, University of Adelaide. Previous positions have been Senior Research Fellow at the Centre for Regional Engagement (CRE) at the University of South Australia; Senior Lecturer in the David Unaipon College of Indigenous Education and Research at the University of South Australia and Senior Lecturer in Yunggoorendi First Nations Centre for Education and Research and the School of Medicine at Flinders University.



Invited Speakers

A/Prof Rachel A. ANKENY

Rachel A. Ankeny has a BA in Liberal Arts; MA degrees in Philosophy, Bioethics, and Gastronomy; and a PhD in the History and Philosophy of Science. She is Associate Professor of History at the University of Adelaide (2006-present); she previously was director and lecturer/senior lecturer in the Unit for History and Philosophy of Science at the University of Sydney (2000-6). She also has an honorary appointment at the Centre for Values, Ethics and the Law in Medicine at the University of Sydney. Her research in bioethics examines ethical and policy issues in genetics, reproduction, women's health, embryo and stem cell research, and science and technology policy, among other topics. She was a co-investigator on an ARC Discovery Project grant entitled "Big-Picture Bioethics: Policy Making and Liberal Democracy" (2005-9), as well as on a NSW Cancer Council grant entitled "Toward a Best Practice of Emerging Technologies: PGD and HLA Typing for Paediatric Transplantation" (2007-10) and several recent NHMRC grants. Rachel serves as a member of the Gene Technology Ethics and Community Consultative Committee for the Office of the Gene Technology Regulator of the Commonwealth of Australia and as Treasurer for the International Network on Feminist Approaches to Bioethics (FAB).



Dr Eric BRUNNER

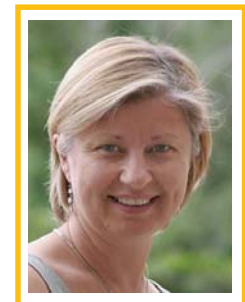
Eric Brunner (MSc PhD FFPH) is a Reader in the Department of Epidemiology & Public Health, University College London. He has an MSc in Biochemistry and a PhD in Epidemiology (UCL, 1994). Eric is an Investigator on the Whitehall II cohort study, which started in 1985 to examine social inequalities in coronary heart disease risk but has expanded into a study of inequalities in healthy ageing. He is a co-editor of the Cochrane Heart Group, a member of the European Diabetes Epidemiology Group and presently on the organising committee of the annual Society for Social Medicine conference that will take place in London in the wake of the 2012 Olympics. Eric is co-director of the Masters in Social Epidemiology: Health and Society at UCL and directs a summer school on the Social Determinants of Health. He has authored or co-authored more than 50 peer reviewed publications in the past three years. His interest in nutritional epidemiology and food policy led to the work to be presented at PHAA on fish stocks and health inequalities.



Prof Annette BRAUNACK-MAYER

Professor Braunack-Mayer is Acting Head of the School of Population Health and Clinical Practice at The University of Adelaide. Her substantive position is Professor in Ethics in the Discipline of Public Health. She has also held short appointments as a Visiting Research Fellow at the Centre for Ethics in Medicine at the University of Bristol in the UK and the Department of Ethics, Philosophy and History of Medicine at Radboud University in the Netherlands.

Professor Braunack-Mayer has published widely in public health and general practice ethics, including a text on ethics in general practice. She has also edited, with Prof Wendy Rogers, the ethics and law section of the Elsevier Encyclopedia of Public Health. She is a chief investigator on a range of research projects, including an NHMRC Capacity Building Grant focusing on building capacity for integrated decision-making for improving health services, and ARC projects on the technical, legal, ethical, social and economic acceptability of data linkage for vaccine safety surveillance, community involvement in pandemic influenza planning, and strategies to maximize cooperation between the health and education sector in implementing public health programs. To each of these projects she brings her expertise in public health ethics and qualitative research.



Invited Speakers

Olga HAVNEN

Olga Havnen is a powerful advocate for Aboriginal and Torres Strait Islanders and has had longstanding and active involvement in international human rights and Indigenous issues. Olga is currently Head of Indigenous Strategy Development with Australian Red Cross and has held senior positions within both government and non-government sectors. Olga's commitment to human rights and social justice has led to an extensive career in management, policy and research, advocacy and community development. Some of Olga's previous appointments include, Policy Advisor at the Office of Indigenous Policy at the Department of the Chief Minister- Northern Territory Government, Manager of Indigenous and International Programs at Fred Hollows Foundation, Deputy Director of the Northern Land Council and Executive Officer, Indigenous Issues Department of Foreign Affairs and Trade. Olga has represented the Australian Government at various international forums, including the United Nations Working Group on Indigenous Populations and has served as a member of the ACOSS Board of Governors, a Board Member of the Diplomacy Training Program (UNSW) which provides human rights training and education in the Asia Pacific region, on the National Committee of ANTaR and was Coordinator of the NT Combined Aboriginal Organisations, responding to the Federal Government's emergency intervention in the NT.

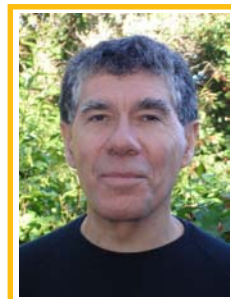


Prof Margaret ALSTON OAM

Professor Margaret Alston, B.Soc. Stud (Syd), Dip. Comp. Applic. (RMIHE), M. Litt (UNE), PhD (UNSW), assumed duties as Head of Department of Social Work at Monash University in July 2008. She has established the Gender, Leadership and Social Sustainability (GLASS) research unit at Monash. Prior to commencing at Monash she was Professor of Social Work and Human Services and Director of the Centre for Rural Social Research at Charles Sturt University. She is also an Honorary Professor at the University of Sydney. She has served on a number of Boards including the Foundation for Australian Agricultural Women, Family Services Council, Family and Community Services Department in Canberra and the National Women's Advisory Group overseeing the Rural Women's Policy Unit in the Department of Primary Industries and Energy. In 2008 she was appointed to the Australian delegation attending the commission for the Status of Women meeting in New York. In 2009, 2007 and 2003 she spent time as a visiting expert in the Gender Division of the United Nations Food and Agricultural Organisation in Rome. She has published widely in the field of rural gender and rural social issues. She has also acted as a gender expert for UN-Habitat in Kenya in 2009. She has been a keynote speaker at a number of national and international conferences over the last several years and is sought out for media commentary on the rural social condition, and on climate change and gender issues.

A/Prof Dennis MCDERMOTT

Associate Professor Dennis McDermott leads Aboriginal and Torres Strait Islander Health teaching, curriculum development and research at Flinders University. Dennis is a Koori psychologist with family connections to Gadigal land (inner Sydney) and Gamilaroi country (North-West NSW). He is also a poet: until recently, he chaired the judging panel for the David Unaipon Award for the best unpublished Indigenous manuscript, part of the Queensland Premier's Literary Awards. He has a particular interest in Indigenous social, spiritual and emotional well-being, Indigenous health workforce and pedagogy, and the nexus of culture and context in service delivery, and has published in a number of these areas. In 2005, he was made an Honorary Fellow, He Pūkenga Taiea, of Te Mata o te Tau, the Academy for Maori Research and Scholarship. Dennis was awarded the 2006 Dr. Ross Ingram Memorial Essay Prize by the Medical Journal of Australia.



Invited Speakers

Prof Judith DWYER

Professor Judith Dwyer works in the Department of Health Care Management at Flinders University in South Australia, and was formerly the head of the Department of Health Policy and Management at La Trobe University. She is a former CEO of Southern Health Care Network in Melbourne, and of Flinders Medical Centre in Adelaide, and worked in the Australian health system for more than 20 years in a broad range of community, hospital and government settings. She is currently a Research Program Leader for the Cooperative Research Centre for Aboriginal and Torres Strait Islander Health, with a focus on 'Enabling Systems and Policy'. Professor Dwyer's research is focused on health system governance and design, with a particular interest in Aboriginal health services; and she teaches in a leading Master of Health Administration program in Australia and in China. She recently published (with colleagues) the results of a major study of the effectiveness of government funding for Aboriginal Community Controlled Health Services (*The Overburden Report: Contracting for Indigenous health services*, available at <http://www.crcah.org.au/publications/>).



Judith is a fellow of the Australian Institute of Company Directors, and of the Australian College of Health Service Executives, and has extensive experience as a board director and as a senior manager. She was the inaugural president of Women's Hospitals Australasia, and founding chair of the Australian Resource Centre for Healthcare Innovation. She was listed as one of Australia's 'Smart 100' by The Bulletin in 2003, and was awarded the inaugural Women's Health Award by the Australian Medical Association in 1998.

She has published widely in academic and professional journals, and with colleagues is the author of the popular book *Project Management in Health and Community Services: Getting Good Ideas to Work*, published by Allen and Unwin.

Prof Cindy SHANNON

Professor Shannon is Professor of Indigenous Health in the Faculty of Health Sciences at the University of Queensland, senior policy advisor for the Queensland Aboriginal and Islander Health Council and director of the Institute for Urban Indigenous Health. She is also director of Shannon Consulting, a company specialising in providing management, policy and workforce services and support to Aboriginal and Torres Strait Islander health. She brings experience in the health needs of Aboriginal persons and Torres Strait Islanders to the NHMRC Council.

Prof Alan PETERSEN

Alan Petersen is Professor of Sociology at Monash University in Melbourne and Honorary Visiting Professor at Centre for Biomedicine and Society, King's College, London. Until late 2007 he was Professor of Sociology at University of Plymouth in the UK. He has researched and written extensively in the field of critical public health for more than 20 years, having been Inaugural Australasian Editor of *Critical Public Health* (1988-2001) and a member of the editorial board and international advisory board since then. His research has encompassed studies of the discourses and practices of the new public health; caring for people with mental illnesses in minority ethnic communities; the impact of genetics on public health; and the science, policy and public representations of nanotechnologies. In the UK, he undertook two projects on nanotechnologies. In 2009 he undertook a literature review on the social and economic impacts of nanotechnologies for the Department of Innovation, Industry, Science and Research.



Invited Speakers

A/Prof Ngiare BROWN

Associate Professor Ngiare Brown is an Aboriginal woman from the South Coast of NSW and one of the first few identified Aboriginal medical graduates in Australia. She is a medical graduate of the University of Newcastle, with postgraduate qualifications in public health and primary care, and clinical training in emergency medicine. She is currently undertaking doctoral studies in health, law and human rights, and her professional interests focus on Aboriginal child health and the health of the world's Indigenous peoples.

Ngiare has held a number of positions in medical education, policy, clinical practice and research. She is a founding member, and was Foundation CEO, of the Australian Indigenous Doctors' Association; was Assistant Director at the Menzies School of Health Research in Darwin; and has recently been appointed as Director of the Poche Centre for Indigenous Health at the University of Sydney, with other appointments including the National Health and Medical Research Council; the Australian Social Inclusion Board of the Deputy PM; and the Board of community focused role modelling and mentoring initiatives for Aboriginal youth.

Dr Suwit WIBULPOLPRASERT

Dr. Suwit Wibulpolprasert is a general practitioner, a public health specialist, an administrator and a policy advisor and an advocate. He has extensive experience in the areas of human resources for health; health economics and health care financing; international trade and health; health promotion; health information; disease surveillance and control and pharmaceuticals. He has published more than 100 papers, reports and books locally and internationally.

During the past ten years, Dr. Suwit has been representing Thailand in many international health forums and has chaired several Steering Committees and Executive Boards such as the WHO Executive Board, the UNAIDS Programme Coordinating Committee, the Health Metrics Network, the Asia-Pacific Action Alliance on Human Resources for Health, the Asian Partnership on Avian Influenza Research, the Program and Policy Committee of the Global Health Workforce Alliance, and the Policy and Strategy Committee of the Global Fund; and served as the President of the Intergovernmental Forum on Chemical Safety.

Dr. Suwit served as Deputy Permanent Secretary of the Thai Ministry of Public Health in 2000-2003 and a Senior Advisor in Health Economics in 2003-2006. Currently, he serves at the highest rank of government official (PC11) as a Senior Advisor on Disease Control. He is also responsible for health policy and international health work of the ministry.

